



Parent update 16th January 2026



Contents

DIARY DATES	2
SCHOOL PHOTOS – MONDAY 19 TH JANUARY	3
90TH CELEBRATIONS LAUNCH DAY	3
YEAR 6 – 1930s/1940s	6
YEAR 5 – 1950s	9
YEAR 4 – 1960s	10
YEAR 3 – 1970s	10
YEAR 2 – 1980s	10
YEAR 1 – 1990s	10
NURSERY AND RECEPTION – 2000s - PRESENT DAY	11
TIME CAPSULE IDEAS	13
YOUNG VOICES	14
YEAR 1 TRIP TO TAMWORTH CASTLE	15
COMPASS COFFEE MORNING (ANXIETY)	17
NURSERY ADMISSIONS FOR SEPTEMBER 2026	18
BIG BIRD WATCH	19
SLEEPING BEAUTY PANTOMIME – ONLY A FEW TICKETS REMAINING	20
EARLY LEARNING AND DEVELOPMENT	21
FREE WEBINARS BY AUTISM WEST MIDLANDS	22
SCHOOL UNIFORM DISCOUNT CODE	23
ITEMS FROM PREVIOUS UPDATES	24

At Colebourne, we work together to be...

	Compassionate
	Ambitious
	Respectful
	Engaged

...because at Colebourne, we **C.A.R.E.**

DIARY DATES

Monday 12th January	Choir go to Young Voices 2026
Tuesday 20th January	Some class may be closed due to Strike Action – please see Class Dojo for details
Wednesday 21st January	Year 2 Trip to Selly Manor
Wednesday 21st January 08:45-10:00	COMPASS Coffee Morning (Anxiety) <i>See flyer in the main newsletter</i>
Thursday 22nd January	M&M Productions - Evening panto - Sleeping Beauty <i>Only a few places left!</i>
Monday 26th January	Some class may be closed due to Strike Action – please see Class Dojo for details
Thursday 29th January	Some class may be closed due to Strike Action – please see Class Dojo for details
Tuesday 3rd February, 08:50 – 10:00	Parent update meeting with Mr. Guest (in person or online)
Monday 9th February 08:50	Celebration Assembly (Years 4 – 6)
Tuesday 10th February	Year 6 Trip to National Courts of Justice
Wednesday 11th February	Parents' Evening
Thursday 12th February 08:50	Celebration Assembly (Years 1 – 3)
Thursday 12th February	Parents' Evening
Friday 13th February	Last day of the first half of Spring term
Monday 23rd February	Start of the second half of Spring Term

School Photos – Monday 19th January

All children will have an individual photo taken on Monday.

Please note the only sibling photos that will be taken are those who have completed the SIBLING PHOTO FORM:

<https://forms.office.com/e/2mi0aRUUGc>
form by 9am on Monday morning.

Nursery are included and sibling groups will be done AM and PM to ensure nursery siblings are included.

If children have PE, they should wear uniform on Monday. Teachers will communicate with any affected year groups with any other arrangements.



90th Celebrations Launch Day

We had a fantastic 90th celebrations last week.

Mr. Guest launched the celebrations in assembly and gave a history of the school. Each year group then enjoyed learning about a different decade.

Have a look at some of the photos from the day.

We have also planned some different 90th activities throughout the rest of the school year (see plan later in this section)



Mr. Guest got everyone in the mood with an assembly looking at the history of the school and showing the children the admission books and the school log books from 1936 up to the 90s!





What decade do you think Mrs Wren and Mrs Singh came as?

What about Mr. Guest?



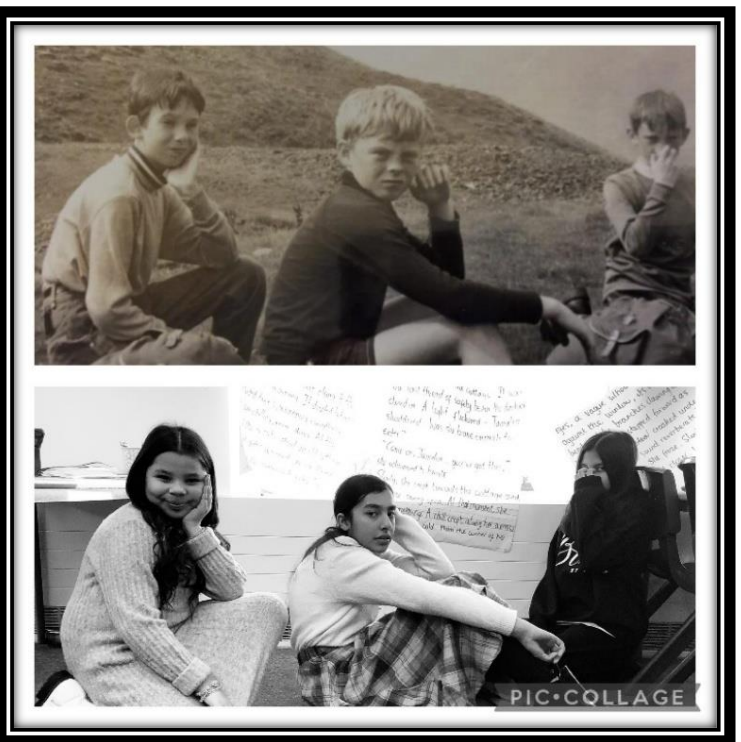
Our wonderful kitchen team got stuck in to with dressing up and also making some retro pudding for the children. Take a bow cheese and pineapple hedgehog!



Year 6 – 1930s/1940s

Year 6 enjoyed recreating some photos from the Colebourne archives.







Year 5 – 1950s

As part of our 90th celebrations, Year 5 children were immersed in life in Britain during the 1950s, learning about the post-war era through discussions about schools, homes and food at the time. There was also plenty of excitement around rock and roll music 🎸, and in the afternoon the children enjoyed learning some lively 1950s dance steps.

Year 5 enjoyed learning to hand jive!



Year 4 – 1960s

Year 4 enjoyed learning about the 1960s including the introduction of Cassette Players and Digital Calculators. They also explored a huge historic event of the Moon landing on July 20th 1969 (Apollo 11 – Neil Armstrong)

Year 3 – 1970s

Year 3 started their learning looking at the various log books that show the history of Colebourne Primary School including the different name changes and 7 different headteachers. Then we began to learn about our decade: 1970s. We had lots of discussion about food, television, music and fashion and the similarities and differences. The children were very interested to know that the first MacDonalds restaurant opened in 1972!

Year 2 – 1980s

Year 2 have been exploring the 1980s looking at the Introduction of technology such as Gameboys, Nintendo and CD Players. Photos of some of their work – coming soon.

Year 1 – 1990s



The children learned about the history of our school and explored the 1990s.

There were lots of opportunities to question, sing and dance throughout the day – with the Macarena being a firm favourite!



Nursery and Reception – 2000s - present day

Reception have been celebrating Colebourne's 90th birthday. On Monday we had our dress up day and had a mini party in class with balloons and music. Then we started to think about what life was like in the noughties (2000-2010). We have learned about some popular toys from this era such as the 'Tamagotchi', 'Furby', 'Bratz dolls' and the 'Gameboy'. We have enjoyed playing with these over the last week and finding out about the toys our adults played with. We then listened to some popular music from the noughties and explored some of the famous cartoons from this era. These included 'The Cha-Cha slide' (song) 'Dora the Explorer', 'Mr Bean' and 'Ben 10'.



What toys can you spot?

Happy 90th Colebourne

Further celebrations

We are celebrating the school's 90 years with activities and celebrations for the rest of the school year!

Below you can

January	Decades day	Each class produce a decade project board for display
	1930's puddings	1930s pudding available on Decades day
	Launch Time Capsule gathering	Children and staff start planning items for the time capsule
February	90th Collaborative Art Project	All children and staff to contribute to a collaborative art project
March	School Bangers	Children begin learning classic school songs
	Time capsule	Burying of a time capsule to be opened in 2036
April	Dinners across the decades: Throwback Tuesdays:	Each Tuesday in the Summer 1 st Half term children will have a special 'throw back' item for the dinner menu – <i>e.g. Chocolate Concrete with Pink Custard; School Dinner Cheese Flan</i>
May	90 things charity project	Each class to collect 90 things to donate to a charity; a list of charities to be decided on with pupils and staff <i>e.g. dogs home (90 tins of food); homeless charity (90 pairs of gloves); food bank (90 tins of food)</i>
	90th planting display:	A planting area will be developed to celebrate the 90th anniversary e.g. 90 in flowers
June	90th Reunion	Any current or past staff and governors plus ex-pupils (18yrs +)
July	Retro summer Fair	Our usual summer fair with a retro feel



Later this year we intend to bury a time capsule. In the time capsule will be items related to our school and current trends and information about 2026.

The aim is to dig up the time capsule in 2036 for the 100th Anniversary of the school.

We are asking the children to suggest ideas of what to put in the time capsule.

They can make their suggestions via this online form:

[Time Capsule – Fill in form](#)



Young Voices

Well done to all the children who performed at Young Voices this week - what a night. Massive thanks to Miss Nelson and all the staff involved in this.



Year 1 Trip to Tamworth Castle

To launch their new topic, Castles, Year 1 had a fantastic trip to Tamworth Castle. The children were incredibly engaged throughout the day, demonstrated excellent behaviour, and represented the school brilliantly. The year 1 team were so proud of their enthusiasm and curiosity.

After a long walk up to the top of a very steep hill, we finally arrived at Tamworth Castle, ready to explore. We learned all about the role of a squire, explored different pieces of armour, and even helped to assemble them. They were thrilled to have the opportunity to hold a real sword!

We then met the lady of the castle, where the children practised bowing and curtsying and remembered to end each sentence with “my lady.” They helped her lay the table, putting their prepositions into practice.

To finish the day, we explored the entire castle, visited the bedrooms, and even had a peek inside the dungeon! It was a lovely trip, which truly brought our new topic to life. I think the children are really going to like this topic!







PARENT / CARER Coffee Morning

Supporting your child with feelings of
anxiety

DATE: WEDNESDAY 21ST JANUARY

TIME: 9:00-10:00 AM

- RECOGNISE HOW CHILDREN CAN PRESENT WITH ANXIETY
- SIGNS AND SYMPTOMS
- HOW TO SUPPORT YOUR CHILD THROUGH FEELINGS OF ANXIETY
- ACCESSING SUPPORT FOR YOUR CHILD.

AT: COLEBOURNE PRIMARY SCHOOL

In Person – but an online link will be posted via class dojo nearer the time.

Nursery Admissions for September 2026

Applications are now open for Nursery for September 2026 intake. If your child was born between 1st September 2022 and 31st August 2023 they are eligible for admission for September 2026.

You can find more information about our Nursery and the link to the online application form on the admissions page on the school website:
<https://www.colebourne.bham.sch.uk/admissions/>

There will also be information meetings in January 2026 - details to follow.

Parent open mornings to Nursery

- Thursday 5th February 2026 – 10am
- Thursday 16th April 2026 – 10am

To book onto one of these visits please complete this short online form: [Nursery intake September 2026 – Parent Meeting Booking Form](#)



COLEBOURNE PRIMARY SCHOOL

NURSERY ADMISSIONS 2026

Applications are now being taken for
Nursery Admissions for September 2026

For details please visit our **admissions page** where you will find information about our Nursery. There is also the link to the **online application form**.

www.colebourne.bham.sch.uk/admissions/



Colebourne Primary School
Stechford Road, Hodge Hill
TEL: 0121 675 8500
EMAIL: admissions@colebourne.bham.sch.uk



Big Bird Watch

23-25 January 2026



What a great way to spend some time with the family and connect with nature!

Big Garden Birdwatch is the world's largest garden wildlife survey. Every year, hundreds of thousands of nature lovers like you take part, helping to build a picture of how garden birds are faring.

What do I have to do?

A diagram illustrating the three steps of the Big Garden Birdwatch. Step 1: A calendar for 26-28 January with a green circle indicating a 1-hour time slot. Step 2: A garden scene with birds; some are marked with green checkmarks and others with red X's. Step 3: A split-screen showing bird counts for two different times, with a green circle indicating a 30-minute interval and a note to 'Please only record four'.

Choose an hour between 26 and 28 January

Only record the birds that land in your patch

Record the highest number of each bird species you see at any one time

It's easy to sign up and completely FREE: [Big Garden Birdwatch \(rspb.org.uk\)](https://www.rspb.org.uk)



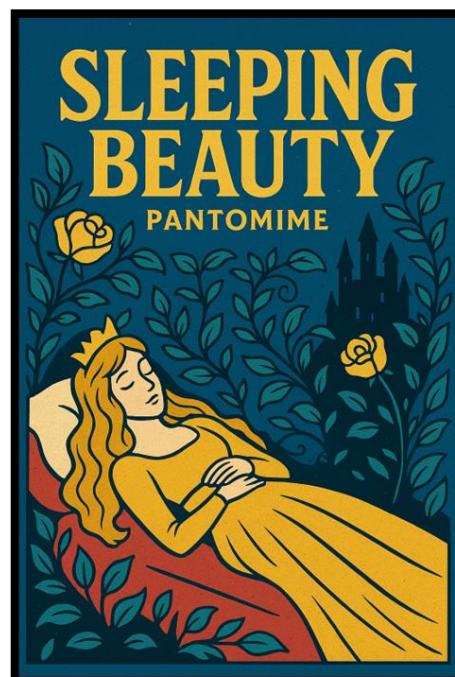
Sleeping Beauty

**Thursday 22nd January
2026**

6pm – 8pm

(show starts at 6.30pm)

Main school hall



**This magical 70-minute performance will
thrill, enchant and excite children and
adults of all ages.**

**Show starts at 6.30pm in the school hall
(doors open from 6.00pm)**

**There will be an interval where drinks and
snacks will be on sale. Flashing toys will
also be on sale before the show and
during the interval.**

**Tickets are limited and are available on
a first come first serve basis.**

**Children must be accompanied by a
responsible adult.**

**Tickets
Only
£7 each**

(children under 3 free)

**Tickets on sale now!
Pay via the Arbor Shop**

Please note—The school will take no responsibility for children at this event. Payments are non-refundable.

Early learning and development

Did you know that 90% of your child's brain growth happens before the age of 5?

Right from the start, all those little moments you spend together with your child are building their brain.

We know that many of the children who start school at Colebourne have not yet developed the communication skills that are typical for their age. The ideas on this website are very important in helping them develop these skills.

Small daily activities and strategies can make all the difference.

Every smile, cuddle, chat and game makes a huge difference, helping them learn to communicate, develop confidence and make friends.

Find lots of ideas, easy tips and activities you can do together with your child.

You can also sign up for email alerts.

Learning to talk



0 to 6 months –
Learning to talk



6 to 12 months –
Learning to talk



1 to 2 years –
Learning to talk



2 to 3 years –
Learning to talk
and communicate



3 to 5 years –
Learning to talk
and communicate

<https://www.nhs.uk/start-for-life/early-learning-development/>



We have been made aware of the following NHS funded Autism West Midlands webinars coming up which may be of interest to some of your parents:

Tuesday 10th February

Autism and Sensory Differences:

https://3edea674-300a-4420-9f42-a09bb5469dc4.webinarninja.com/live-webinars/10657251/register?in_tok=8a563eb2-ff91-4eb3-84ca-9e37791afd46

Tuesday 10th March

Autism and Behaviour:

https://3edea674-300a-4420-9f42-a09bb5469dc4.webinarninja.com/live-webinars/10657252/register?in_tok=03223ca7-3103-445f-8d9d-e4dc4987814e

A recording of the webinar will also be sent out to anyone who signs up and will be available to view for two weeks following the webinar.

SPECIAL OFFER FROM MYCLOTHING

Save 10% on School Uniform

Just use code MYCQ110 at checkout to
enjoy 10% off your next order*.



*This offer excludes bundles,
events hoodies and clearance
items. Valid until 31.03.2026
www.myclothing.com





Items from previous updates

School Dinner Menus (Spring Term)

Here are the dinner menus for the Spring Term. Please note that occasionally menu items do change where we have supplier issues.

<div style="display: flex; justify-content: space-between; align-items: center;"> <div>  YOUR MENU Week ONE </div> <div style="text-align: right;"> Spring Term  </div> </div>				
Monday	Tuesday	Wednesday	Thursday	Friday
Cheese and Potato Pie Fish Fingers Baked Potato with the daily topping A selection of freshly made sandwiches and baguettes	All day breakfast Mac and Cheese Baked Potato with the daily topping A selection of freshly made sandwiches and baguettes	Lamb Shish Kebab Vegetable Samosa Baked Potato with the daily topping A selection of freshly made sandwiches and baguettes	Margherita Pizza Build your own Wraps Baked Potato with the daily topping A selection of freshly made sandwiches and baguettes	Breaded fish Cheese lattice Baked Potato with the daily topping A selection of freshly made sandwiches and baguettes
Croquette Potatoes Garden Peas Fresh Carrot Batons Baked Beans Seasonal Salad Bar	Hash Browns Broccoli Baked Beans Seasonal Salad Bar	White or Brown rice minted yoghurt dip Mixed veg Kachumber salad Seasonal Salad Bar	Fries Spaghetti hoops Sweetcorn Baked Beans Seasonal Salad Bar	Diced potato Fresh Carrot Batons Peas Baked Beans Seasonal Salad Bar
Chocolate Concrete Fresh fruit Yoghurts Jelly	Anzac Cookies Fresh fruit Yoghurts Jelly	Iced Buns / Mini Fruit Trifle Fresh fruit Yoghurts Jelly	Ice Cream Fresh fruit Yoghurts Jelly	Mousse Fresh fruit Yoghurts Jelly
<div style="display: flex; justify-content: space-between; align-items: center;"> <div> <small>ADDITIONAL MENU OPTIONS AVAILABLE DAILY</small> For any allergen/dietary requirements please speak to the Catering Supervisor </div> <div> MADE FRESH </div> </div> <div style="text-align: center; margin-top: 5px;"><small>OFFICIAL</small></div>				

<div style="display: flex; justify-content: space-between; align-items: center;"> <div>  YOUR MENU Week TWO </div> <div style="text-align: right;"> Spring Term  </div> </div>				
Monday	Tuesday	Wednesday	Thursday	Friday
Baked Fish Fingers Vegetable Lasagne Baked Potato with the daily topping A selection of freshly made sandwiches and baguettes	Hot dogs Mac and Cheese Baked Potato with the daily topping A selection of freshly made sandwiches and baguettes	Cajun Spiced Chicken Vegetable Samosa Baked Potato with the daily topping A selection of freshly made sandwiches and baguettes	Margherita Pizza Tuna Pasta Bake Baked Potato with the daily topping A selection of freshly made sandwiches and baguettes	Chicken Nuggets Hot Vegetarian Pastry Baked Potato with the daily topping A selection of freshly made sandwiches and baguettes
Mashed Potato Garlic bread Garden Peas Baked Beans Seasonal Salad Bar	French Fries Carrot Sweetcorn Baked Beans Seasonal Salad Bar	White or Brown rice Garden Peas Mixed Veg Kachumber salad Seasonal Salad Bar	Garlic Bread Chunky Chips Spaghetti hoops Broccoli Seasonal Salad Bar	Diced potato Sweetcorn Garden Peas Baked Beans Seasonal Salad Bar
Chocolate Hedgehog Fresh fruit Yoghurts Jelly	Flapjack Fresh fruit Yoghurts Jelly	Jam Sponge Tart Fresh fruit Yoghurts Jelly	Ice Cream Tubs Fresh fruit Yoghurts Jelly	Cake of the day Fresh fruit Yoghurts Jelly
<div style="display: flex; justify-content: space-between; align-items: center;"> <div> <small>ADDITIONAL MENU OPTIONS AVAILABLE DAILY</small> For any allergen/dietary requirements please speak to the Catering Supervisor </div> <div> MADE FRESH </div> </div> <div style="text-align: center; margin-top: 5px;"><small>OFFICIAL</small></div>				

New local Mental Health Support – Alum Rock

The
Children's
Society

Pause.

ForwardThinking
Birmingham

**Need someone to talk to?
Struggling to cope with feelings?
We're here for you.**

**Pause can help anyone under 25 with a
Birmingham GP. We listen and help you find
solutions – no referrals or long waits.**

You choose when and how to use our service:

• Drop-in face to face support is available, check
our webpage for dates & venues. (Booked face to
face sessions are available in certain
circumstances.)

Or

• Request a phone or video call back, using
the website or by calling the registration line.

Our Service Operates:

- Monday to Saturday
- We are closed Sundays & Bank Holidays.

To find out more and register for support, visit:
<https://forwardthinkingbirmingham.nhs.uk/pause>
or call our Registration Line 0207 841 4470
(please note local call charges do apply).



Pause.

WE ARE COMING NEAR YOU!

ForwardThinking
Birmingham



We are coming to a new location near
you for our Thursday drop-in!

Effective from 23rd October 2025
onwards

Please check our website for locations,
times and further information

<https://forwardthinkingbirmingham.nhs.uk/pause>

Find us here on Thursdays:
Anthony Road Children's Centre,
Anthony Road, Alum Rock, Birmingham
B8 3AA



The
Children's
Society



Governing Body Vacancies

We have several **Co-opted vacancies** on our school governing board.

One of these **co-opted** vacancies can be a **parent** of the school. This is different from a parent governor as they are typically elected by the parents. The Co-opted governors on the other hand are elected by the board of governors.

If you are interested in serving on the board of governors as a co-opted governor or would just like some more information – please contact Mr. Guest.

We also have a vacancy for a non-parent coopted governor. If you know anyone who may be interested in – please ask them to get in touch.

We ideally need **skills** including: **human resources; legal; finance; and general business.** We are also keen to have representations on our board from **community** or **charity organisations** who can contribute to the wider ethos of the school.

Please see below an information poster about the governing body – please pass this on to any contacts you feel may have the skills and be able to contribute to the school governing body.



Colebourne Primary School
Stechford Road, Hodge Hill, B34 6BJ

SCHOOL GOVERNOR VACANCY

SCAN ME

Are you interested in ⁺⁺supporting the strategic direction of a local primary school?
Do you have skills or experience in human resources, business, legal or other relevant field?

CONTACT STUART GUEST (HEADTEACHER) FOR MORE INFORMATION ABOUT THE ROLE.

0121 675 8500 opt 1
s.guest@colebourne.bham.sch.uk
www.colebourne.bham.sch.uk

“Working together to achieve success for all”

Colebourne Primary School is a successful and oversubscribed school, serving the children and local community with high quality staff, supportive parents and committed governors. We pride ourselves on our caring approach, high expectations and a continual drive to raise standards and improve life chances. Please visit the school website for more information about the school.

Extreme Weather Response

At Colebourne we have an extreme weather policy which supports us in ensuring the safety of pupils, staff and families.

You can see the full policy via the **policies link** on the new school website parents section: <https://www.colebourne.bham.sch.uk/parents/>

This policy outlines our procedures and actions in response to extreme weather conditions, particularly when yellow and red warnings are issued by the relevant authorities. Please note the following information regarding how we communicate any changes with parents:

Please note:

- *School is **open** unless a message is sent to say otherwise.*
- *We will always announce any unexpected school closure via Class Dojo AND direct in-app message via Arbor. **If there is no message – there is no closure.***
- *Parents should not need to call the office or message staff to ask if we are open or closed – they should check messages first.*
- *We DO NOT typically message parents to say school is open, UNLESS there is significant snow and we wish to be clear regarding school being open.*

Pupil absence reporting

A reminder of how to **report a pupil absence**.

Please phone the school office number – 0121 675 8500 (The **online form** is **no longer be available**).

Follow the options to report an absence.

You will be prompted to **leave a voice mail** message giving details of:

- Your **child's name**
- Your **child's class**
- A **brief explanation** of the **reason for absence**.

Please note – this message can be left in **home language** if needed as our system can automatically translate.

Please aim to leave your absence message by 8.40am on the first day of absence.

Please note – voice messages are recorded and stored for reasons of absence.

Holidays in Term Time

Please remember that Department for Education guidance means that we are not able to authorise holidays in term time. Please avoid booking these.

Annual Calendar for the school year

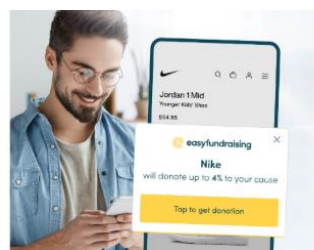
To help parents with arrangements, here is an overview of the main school dates for next school year.

Please remember we are unable to authorise holidays in term time; please book any of these in the school holidays.

Easy fundraising: Raise money for Colebourne while you shop

<https://www.easyfundraising.org.uk/causes/colebourneprimary>

Please remember to use easyfundraising every time you shop online. Over 7,000 brands will donate to us, including all the big names like eBay, John Lewis & Partners, Argos, ASOS, Expedia, M&S, Just Eat, Uswitch and many more! This means you can raise FREE donations for us no matter what you're buying. If you haven't signed up to support us yet, it's easy and completely FREE. These donations really help us, so it would be great if you could take a moment to get started! You can find our easyfundraising page



- RAISE EVEN MORE**
Get the Donation Reminder to raise up to 5x more donations
- 1 Get the app
Download the app from the Apple store on your iPhone, or from the Play store for your Android.
 - 2 Enable the Donation Reminder
Follow the simple instructions shown in the app to enable the Donation Reminder.
 - 3 Shop as normal
Once the Donation Reminder is enabled, you can shop on most brand websites and an alert will pop up to help you get a donation.

here: <https://www.easyfundraising.org.uk/causes/colebourneprimary/>



Annual Calendar

2025- 2026

September						
M	T	W	T	F	S	S
1	2	3	4	5	6	7
8	9	10	11	12	13	14
15	16	17	18	19	20	21
22	23	24	25	26	27	28
29	30					

October						
M	T	W	T	F	S	S
		1	2	3	4	5
6	7	8	9	10	11	12
13	14	15	16	17	18	19
20	21	22	23	24	25	26
27	28	29	30	31		

November						
M	T	W	T	F	S	S
					1	2
3	4	5	6	7	8	9
10	11	12	13	14	15	16
17	18	19	20	21	22	23
24	25	26	27	28	29	30

December						
M	T	W	T	F	S	S
1	2	3	4	5	6	7
8	9	10	11	12	13	14
15	16	17	18	19	20	21
22	23	24	25	26	27	28
29	30	31				

January						
M	T	W	T	F	S	S
			1	2	3	4
5	6	7	8	9	10	11
12	13	14	15	16	17	18
19	20	21	22	23	24	25
26	27	28	29	30	31	

February						
M	T	W	T	F	S	S
						1
2	3	4	5	6	7	8
9	10	11	12	13	14	15
16	17	18	19	20	21	22
23	24	25	26	27	28	

March						
M	T	W	T	F	S	S
						1
2	3	4	5	6	7	8
9	10	11	12	13	14	15
16	17	18	19	20	21	22
23	24	25	26	27	28	29
30	31					

April						
M	T	W	T	F	S	S
		1	2	3	4	5
6	7	8	9	10	11	12
13	14	15	16	17	18	19
20	21	22	23	24	25	26
27	28	29	30			

May						
M	T	W	T	F	S	S
				1	2	3
4	5	6	7	8	9	10
11	12	13	14	15	16	17
18	19	20	21	22	23	24
25	26	27	28	29	30	31

June						
M	T	W	T	F	S	S
1	2	3	4	5	6	7
8	9	10	11	12	13	14
15	16	17	18	19	20	21
22	23	24	25	26	27	28
29	30					

July						
M	T	W	T	F	S	S
		1	2	3	4	5
6	7	8	9	10	11	12
13	14	15	16	17	18	19
20	21	22	23	24	25	26
27	28	29	30	31		

Key						
School closed- Holidays						
School closed- Bank holiday						
Staff training days (school closed for children)						
Voting day (School closed for children)						

Term dates and staff training days for the year

The updated term dates and the staff training days are on the school website: <https://www.colebourne.bham.sch.uk/diary-and-term-dates/>

Extreme Weather Response

At Colebourne we have an extreme weather policy which supports us in ensuring the safety of pupils, staff, and families.

You can see the full policy via the **policies link** on the new school website parents' section: <https://www.colebourne.bham.sch.uk/parents/>

School Policy Reminders

Label clothing and equipment

Please label children's clothing – especially jumpers, coats and lunchboxes. Items with names on get back to their owners much faster!

Start times and pick up times

Start times:

The playground gates open at 8.30am. All pupils should be in class by 8.40pm.

The top gates are closed promptly at 8.40am.

Arrivals after this time should walk around to the school office via the vehicle entrance.

Pick up times:

3.20pm (Monday to Thursday)

12.40 (Friday)

Reception doors open 5 minutes before these times to allow parents to collect reception children before collecting other children.

We ask that parents collect children from Year 3, 4, 5 and 6 BEFORE collecting siblings from Year 1 and 2; this helps us clear the playground at the end of the day.

Nuts:

Children should not bring any items containing nuts into school.

Water Bottles:

Please ensure your child has a fresh water bottle each day. It is important for their health and learning that they stay hydrated.

Healthy snack:

Please remember to send only healthy snacks for your child to enjoy during the school day. Thank you for supporting our commitment to healthy eating.

Birthday Treats:

We ask that birthday treats are not brought into school; this includes food items and gift bags.

Jewellery:

The only jewellery allowed in schools is studded earrings and watches (No devices with any recording function); **All jewellery MUST be removed for PE and swimming**; we suggest jewellery is left at home on PE and Swimming days.

School uniform and PE Kit:

Details of our school uniform and supplies is available on the school website: <https://www.colebourne.bham.sch.uk/school-uniform/>

Please remember that PE kit is PLAIN BLACK shorts or jogging bottoms and COLOURED PE T-SHIRT (House colour)

Useful Links for Parents



Home learning grids

Additional learning opportunities each half term

[Home learning grids](#)



BBC Bitesize

Lots of links to learning and skills

<http://www.bbc.co.uk/bitesize/primary/>



Oak National Academy

A huge range of lessons, resources and subjects

[Oak National Academy](#)

We also have some of our subscription services such as



Doodle

A great platform to learn and practise key skills for maths and English

<https://www.doodlemaths.com/>



Times Tables Rockstars

Practice your times tables and quick maths recall skills

<https://play.ttrockstars.com/auth/school/student>

Year group expectation sheets:

[Key expectation sheets](#)

Email address for parents:

parents@colebourne.bham.sch.uk

School information for parents:

<https://www.colebourne.bham.sch.uk/parents/>

Term Dates:

<https://www.colebourne.bham.sch.uk/diary-and-term-dates/>

Easy fundraising: Raise money for Colebourne while you shop:

<https://www.easyfundraising.org.uk/causes/colebourneprimary>

Free school meals checker:

<https://www.cloudforedu.org.uk/oefe/birmingham/provider>

School policies: [School policies](#)

PARENTING AND HEALTH SUPPORT



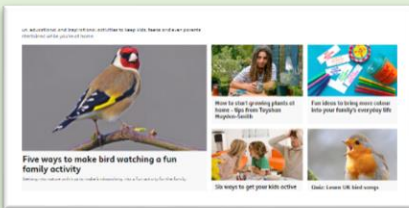
NHS Advice and guidance
The place for trusted NHS advice and guidance to help you have a healthy and happy baby during pregnancy, birth and parenthood.

<https://www.nhs.uk/start-for-life/early-learning-development/>



BBC Wellbeing site
– video and help for parents own mental health and that of their children

<https://www.bbc.co.uk/bitesize/groups/cw9v6l8d0q6t>



BBC bitesize parents
Tips, advice and activity ideas for being a parent

<https://www.bbc.co.uk/bitesize/parents>



Birmingham School Health Support Service
Lots of health related links and support for children and families including: the school nurse; Community paediatric and child development centres; Forward thinking Birmingham...And much more

Birmingham School Health Support Service

FINANCIAL SUPPORT



Water Bill Support

The Big Difference Scheme can offer a reduction of water bills to any Severn Trent customer with a household income below £23,492.

Households with child dependants may be eligible for an additional income allowance more than this amount.

<https://www.stwater.co.uk/my-account/help-when-you-need-it/help-with-paying-your-bill/big-difference-scheme/>



Broadband - Social tariffs

Most broadband providers have **social tariffs** broadband is an option for people in lower-income households. If you're receiving Universal Credit, Pension Credit or certain other government benefits, you could be eligible.

<https://www.virginmedia.com/broadband/low-income-families>

<https://www.bt.com/broadband/home-essentials>

Financial Support – DWP – Drop in sessions



Financial Support DWP Drop-In



with Helen Williams
Family Community Work Coach

Got financial or employment questions?
Want free advice about your benefits or any other queries?

Come along to our DWP Advice Surgery!

We'd love to see you there to help with any employment, training, benefits or financial queries - just come along to the Yardley Family Hub!

These free appointments will be 20 minutes long and will be bookable at the Fox Hollies reception, in-person or by calling 0121 702 2700. This support is available to local families with children aged 0 – 19, and families of children with SEND up to age 25.

Every Tuesday from 1pm - 4pm, at Fox Hollies Family Hub, 419 Fox Hollies Road, B27 7QA

